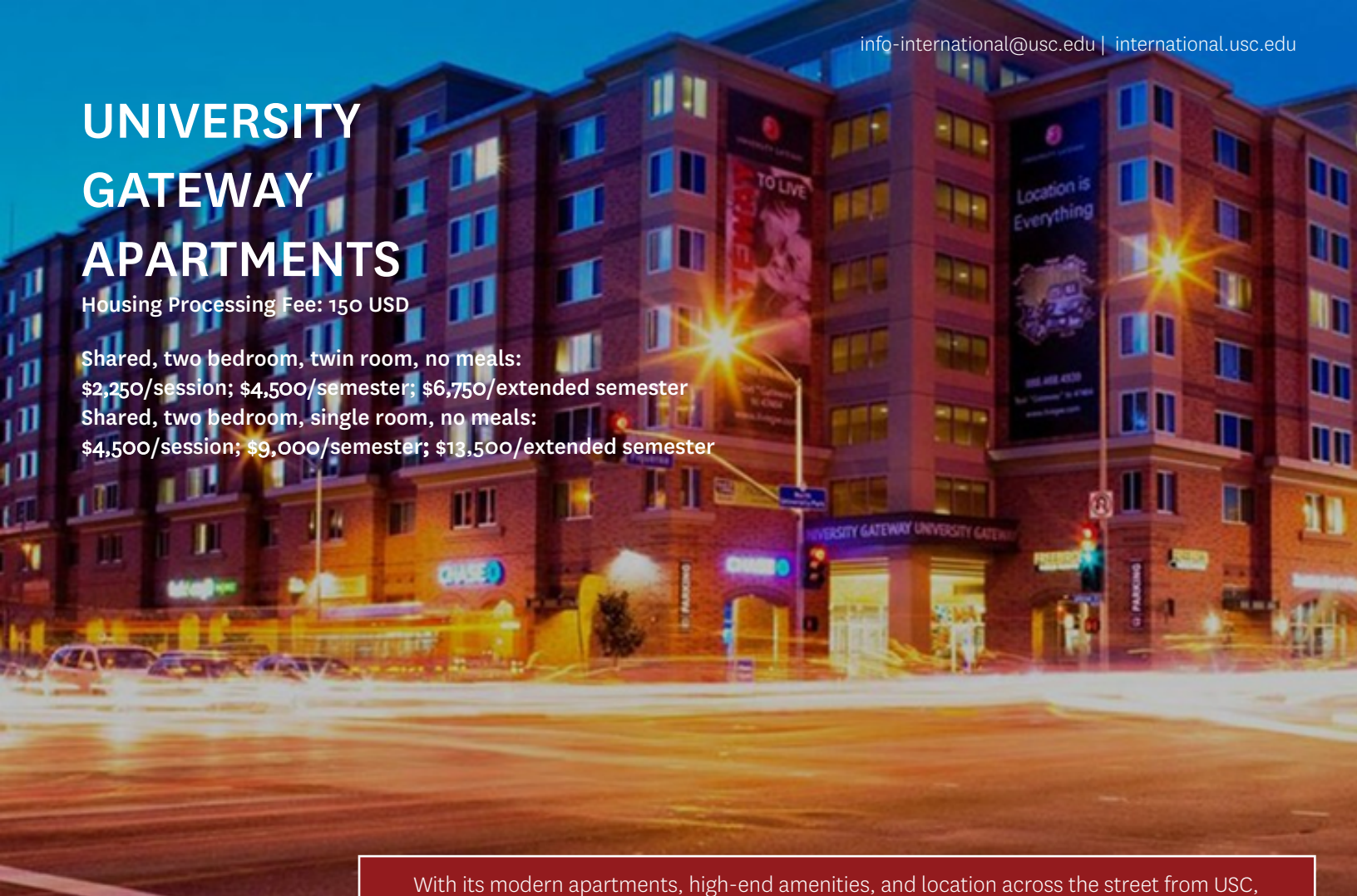


UNIVERSITY GATEWAY APARTMENTS

Housing Processing Fee: 150 USD

Shared, two bedroom, twin room, no meals:
\$2,250/session; \$4,500/semester; \$6,750/extended semester

Shared, two bedroom, single room, no meals:
\$4,500/session; \$9,000/semester; \$13,500/extended semester



With its modern apartments, high-end amenities, and location across the street from USC, University Gateway is a popular student housing option and a great alternative to living on campus.

RESERVE YOUR SPACE TODAY!

Apply online:
ivcwebapps.com/intlacademy



FLOORPLAN

- >> 2 bedroom/2 bathroom apartment for up to 4 students
- >> Bedrooms furnished with a twin bed, dresser, nightstand, desk, chair, and an individual closet for each student
- >> Living/dining area includes a dining table and chairs, sofa, coffee table and TV set
- >> Kitchen equipped with refrigerator, stove, microwave, dishwasher, and very basic kitchen utensils.

FACILITIES

- >> Study areas, media room, computer labs with free printing
- >> Rooftop terrace, sun and soak deck, courtyards with seating
- >> 24-hr fitness center access, free personal training and tanning
- >> Laundry rooms with washers and dryers in the building
- >> Secure car parking available for an additional cost

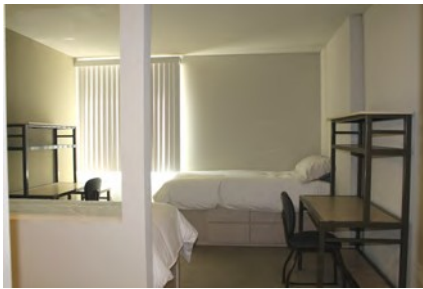
FEATURES

- >> Keycard access
- >> High speed wireless internet & cable TV
- >> Free resident perks including programming and events
- >> Optional meal plan available for additional cost

UNIVERSITY GATEWAY

3335 S Figueroa Street, Los Angeles, CA 90007

At University Gateway, USC International Academy students live in spacious two bedroom, two bathroom apartments with kitchens that feature modern furniture, flat screen TVs, and complimentary Internet and cable.



Bedroom

Each bedroom has two beds and can be shared by up to 2 students. Twin rooms for single occupancy are also available. A bed, desk, chair, dresser and individual closet is provided for each student.

Living Room

The living room comes furnished with a sofa, coffee table, chair, entertainment center and 37" HD flat screen TV.

Bathroom

Each bedroom has one bathroom that includes a shower and is shared by no more than two students.

Kitchen

The kitchen is equipped with a stove, refrigerator, dishwasher, microwave, and garbage disposal. Basic cookware and utensils are provided, though students may need to buy additional pots, pans, plates, and other kitchen supplies.

Meals

Students can purchase food at the various eateries on the ground floor, or on campus. Meals are not included in apartment price, but a USC meal plan can be purchased for an additional cost. Free bottled water and coffee is provided.

Study Rooms

Residents share soundproof meeting rooms, a media lounge, computer labs, and study rooms (three on each floor) for individual or group studying. Free printing is available.

Laundry

Multiple laundry facilities are located in the building and can be used for a small charge. Washers and dryers are coin operated.

Cleaning

Students are responsible for cleaning their own apartments and washing their bedding. Cleaning supplies may be purchased at the nearby convenience store.

Internet

Free Internet access and basic cable television are included in accommodation costs.

Utilities

Electricity, gas and water are included. Each apartment has a heat and air conditioning system.

Welcome Kits

All students living in Academy housing will receive welcome kits on Housing Move-In Day. Kits include:

Bed linens	Pillow
Blanket	Towel

Why Choose Gateway?

Value

- >> Furnished accommodations
- >> Upscale amenities: fitness center, rooftop terrace, tanning domes, laundry rooms, student lounges
- >> Free services: printing at onsite computer labs, personal training, bike repair, 24-hr coffee station
- >> Internet, cable, and utilities included

Location

- >> Across the street from USC campus
- >> Onsite restaurants, bank, pharmacy
- >> Walking distance to USC tram, bus stop, and Jefferson/USC metro station (Expo Line)
- >> Downtown LA, Hollywood, and beaches easily accessible by public transport

Safety

- >> Patrolled by 24-hour, on-site courtesy patrol and USC's Department of Public Safety
- >> Computerized keycard system to enter building
- >> Bicycle room parking and storage; automobile parking may be available for an additional cost

Experience

- >> Live with other USC students
- >> Professional management and maintenance staff
- >> Programming and events

Liability and property insurance is purchased for all enrolled students living at University Gateway. This insurance provides coverage for accidental damage like floods and earthquakes whereas property insurance can cover books and appliances in the residence.

Please note that USC International Academy reserves the right to place a student at any of the apartments or rooms. USC International Academy is unable to guarantee any particular room number or apartment location at the time of booking. Different room types are available and the pictures are examples only. Information is subject to change. Published June 2016.